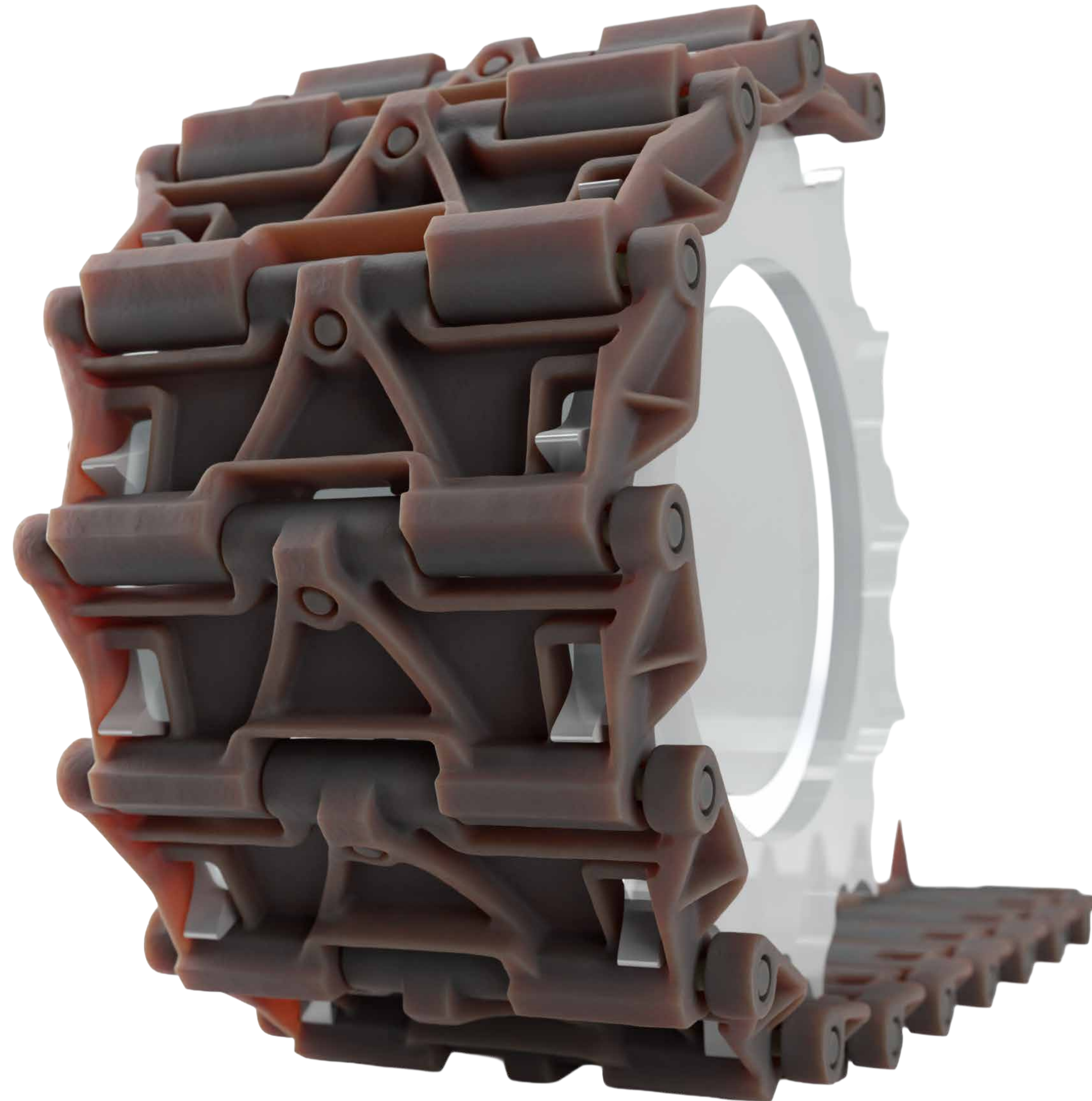


1/35 M24 Chaffee T72 Workable Tracks



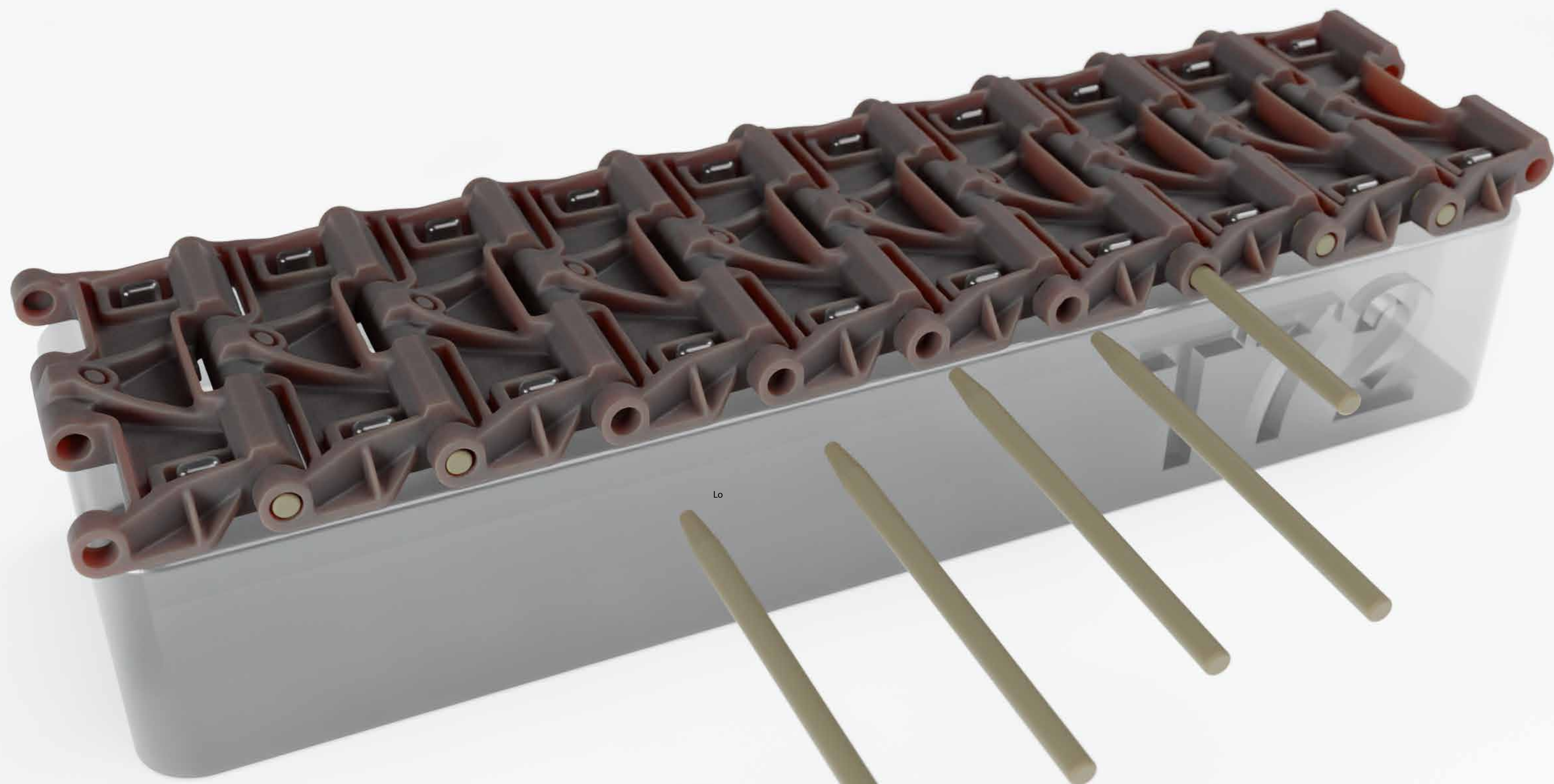
Before You Begin

- **Expect some cleanup.** Leftover print supports can be removed easily with your preferred knife-like implement.
- **Glue is optional.** The track pins stay in place quite well on their own, but if you want to ensure none slip out, you can secure them with a small amount of white glue near the head of the pin.
- **Tracks are handed.** Tracks are printed as left- and right-loading. Keep them separate to avoid headaches!
- **Tracks are workable, not indestructible.** These tracks are printed with high-quality resins that retain a degree of flex after curing. They will withstand the usual handling, test-fitting, painting and weathering without problem. But don't expect them to hold up in a game of tug of war.

1. Lay out track links on assembly jig



2. Install track pins

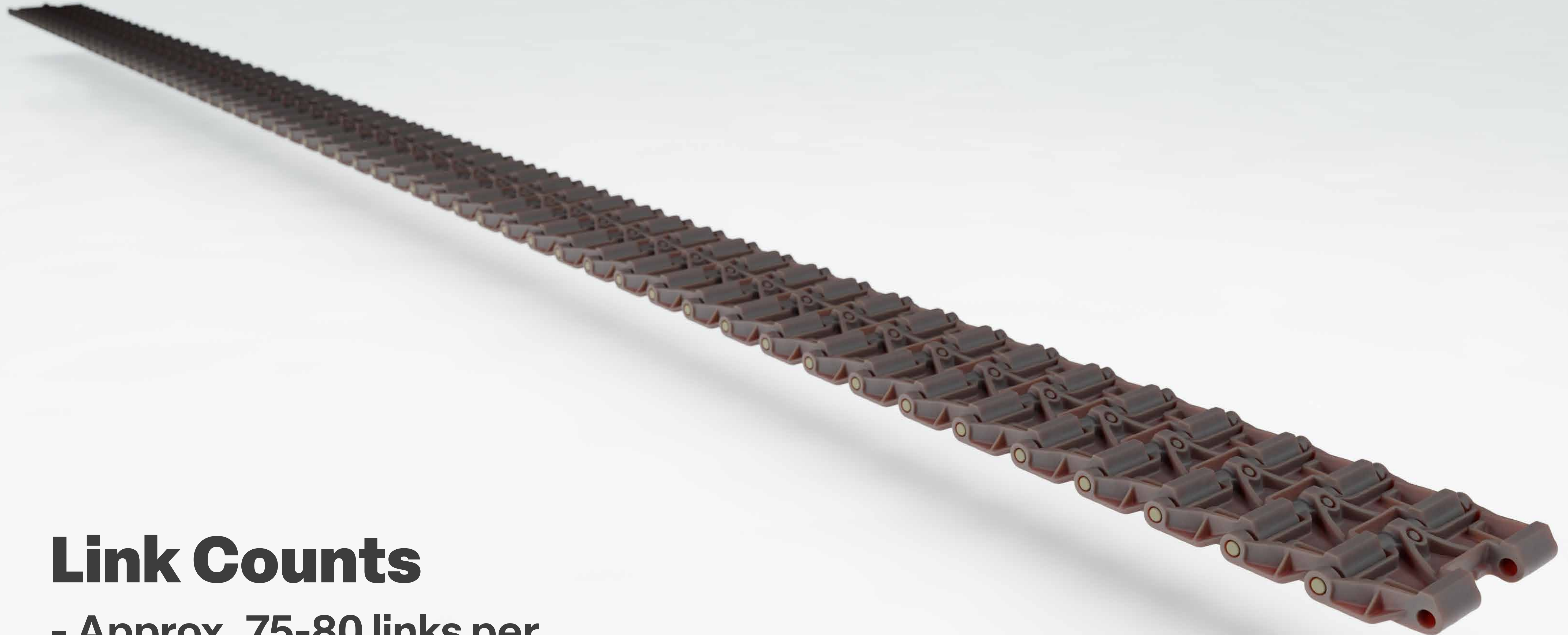


Lo



OPTIONAL: Place small amount of white glue here to lock pin in place.

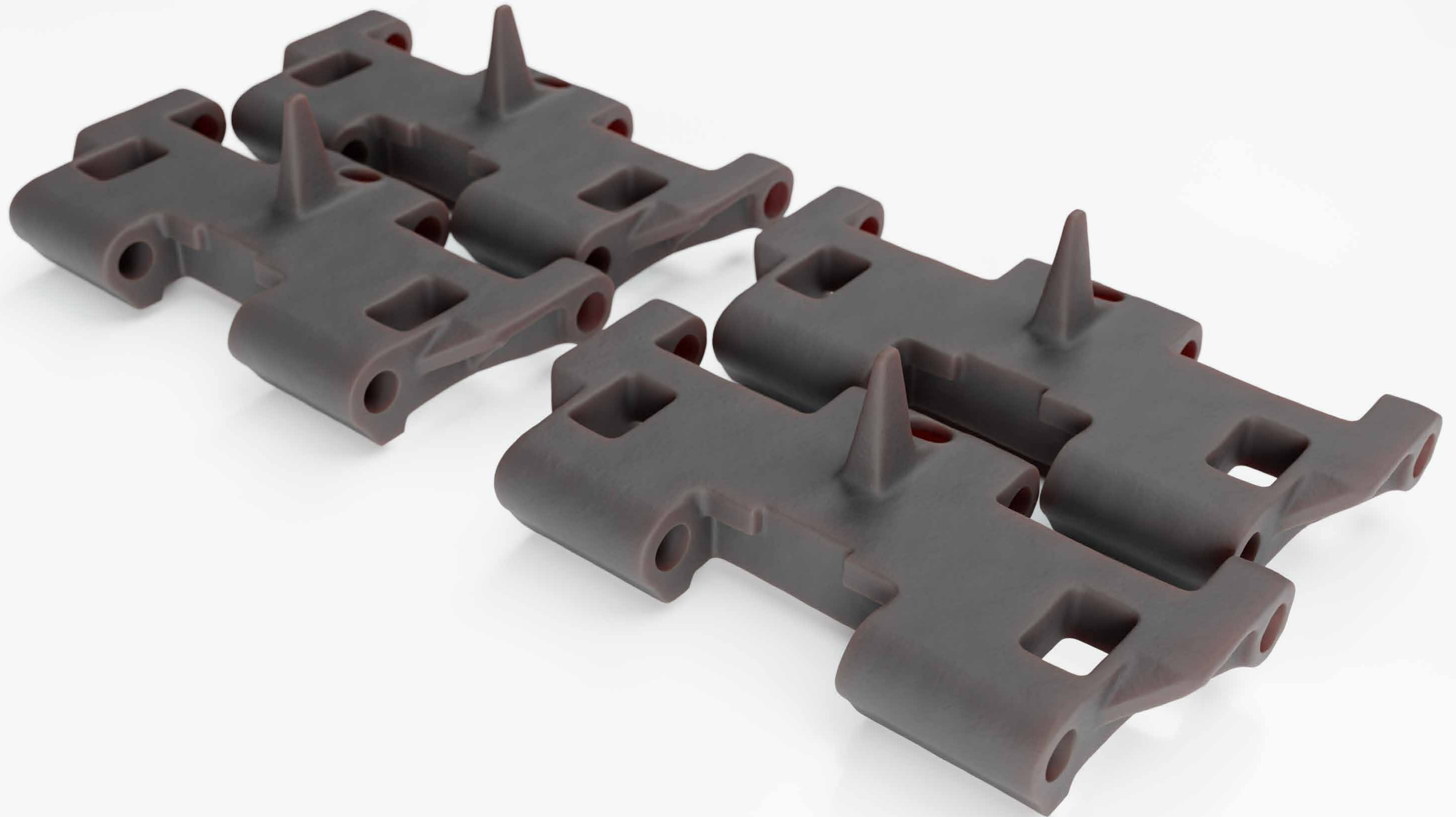
3. Rinse and repeat



Link Counts

- Approx. 75-80 links per track run

4. Install spare links in place of kit parts



SHOW US YOUR TRACKS!

Share in-progress and final pics of our tracks on your build and get 20% off your next order!

Just tag *@doogsstudios* on social media or email *doogs@doogsstudios.com*

Visit the M24 Chaffee Product Guide

Instructions, design notes, reference images, customer builds & more!



<https://doogsstudios.com/j8rq>